

100% Original

iFace

Reflection MagSynq
for Galaxy S Ultra



Official Store

MagSynq Case

**Compatible with
MagSafe
Accessories**



**Powerful
Magnetic Force**
Neodymium magnet

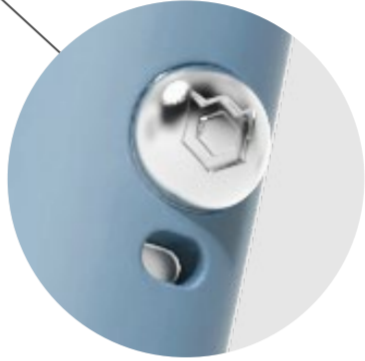
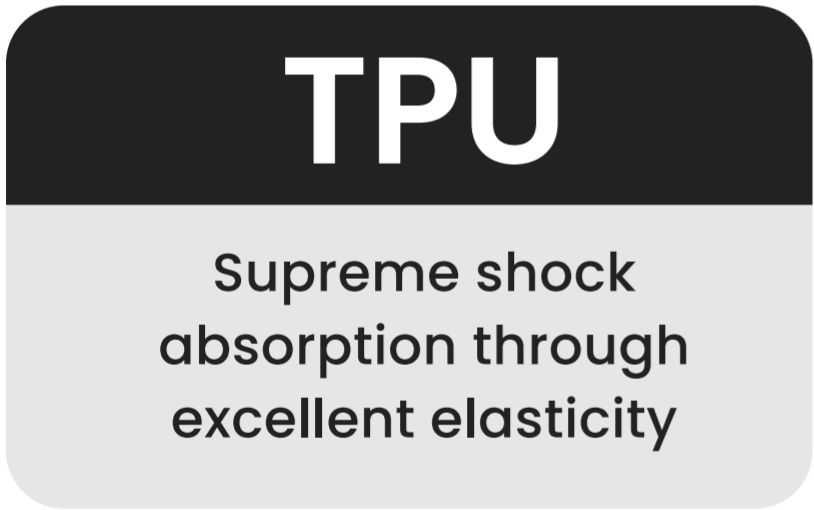


MagSynq
Card Wallet

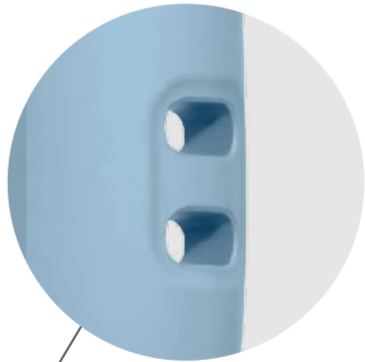


MagSynq™

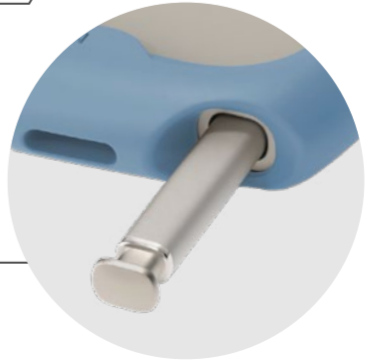
A lineup of MagSafe-exclusive
accessories crafted by iFace's
patent-pending design



Signature Ball
Easy and more secure way to accessorize



Strap Hole
Attaching lanyards, straps, and charms



S-Pen Hole
Hassle-Free and comfortable

REFLECTION



High Durability

Minimize scratches and external shocks from daily use



Shatter-Resistant

Anti-Fingerprint

Prevent Bubbles

9H

Flexible
Tempered Glass



Precautions for Installation and Removal:

Due to the special design of the magnetic module, please avoid applying excessive pressure to the center when installing or removing the case to prevent damage.



No more devastating drops

Military-grade protection

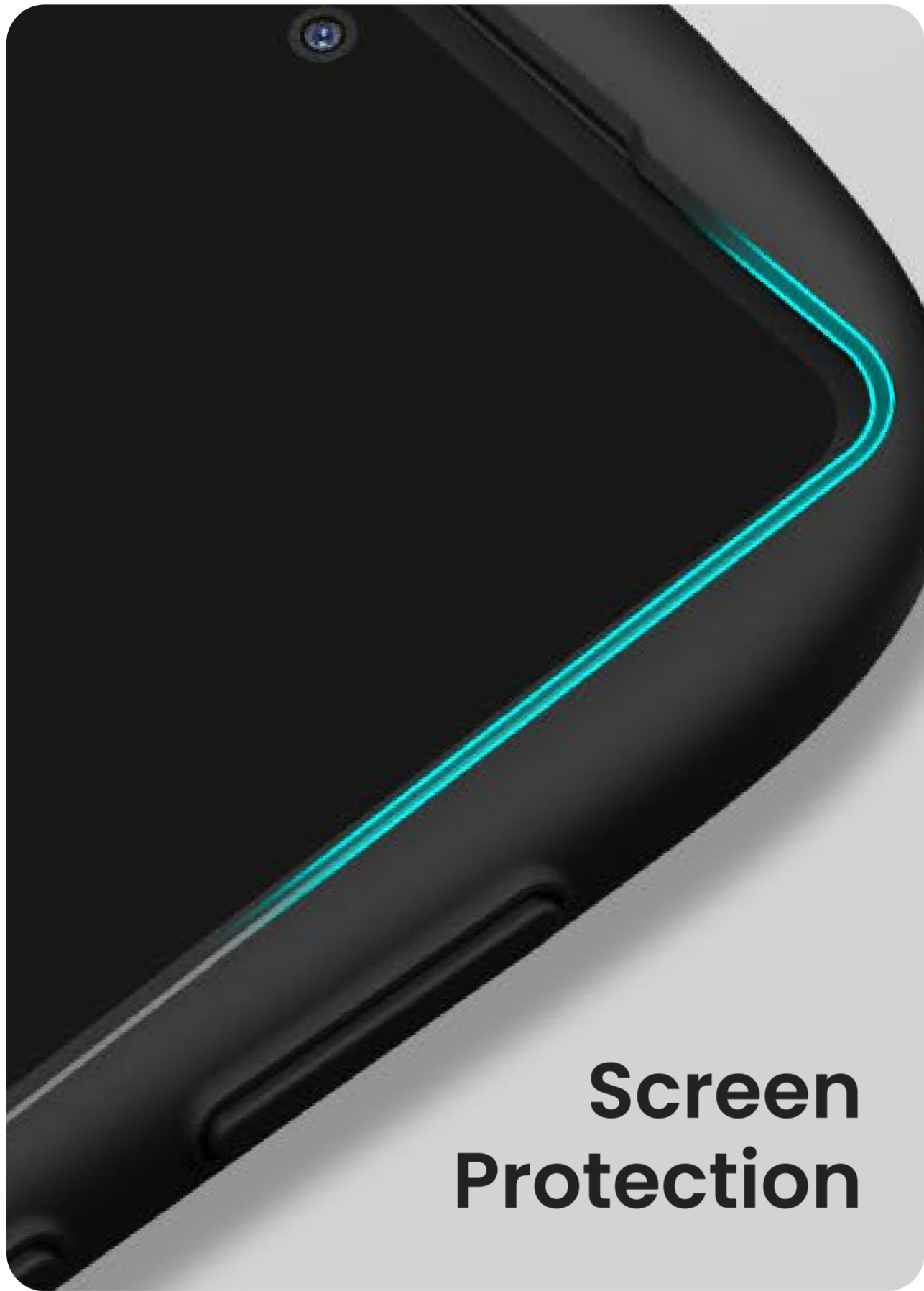


**DROP
TESTED**

CERTIFIED

MIL-STD-810G Test

Over 26 drops from a height of 1.22m
with no damage or abnormalities



**Screen
Protection**

**Raised
Bezel**

Perfectly capturing
every detail with
unique clarity



**Camera
Protection**



Black



Beige



Pale Blue

 Based on Customer Review

Upgraded Glass!

Using iFace's exclusive technology, our flexible tempered glass is both strong and safe, ensuring flexibility and durability during installation and removal.

**Increased
Flexibility for Better
Durability**



🔧 New! Only iFace

Signature Ball

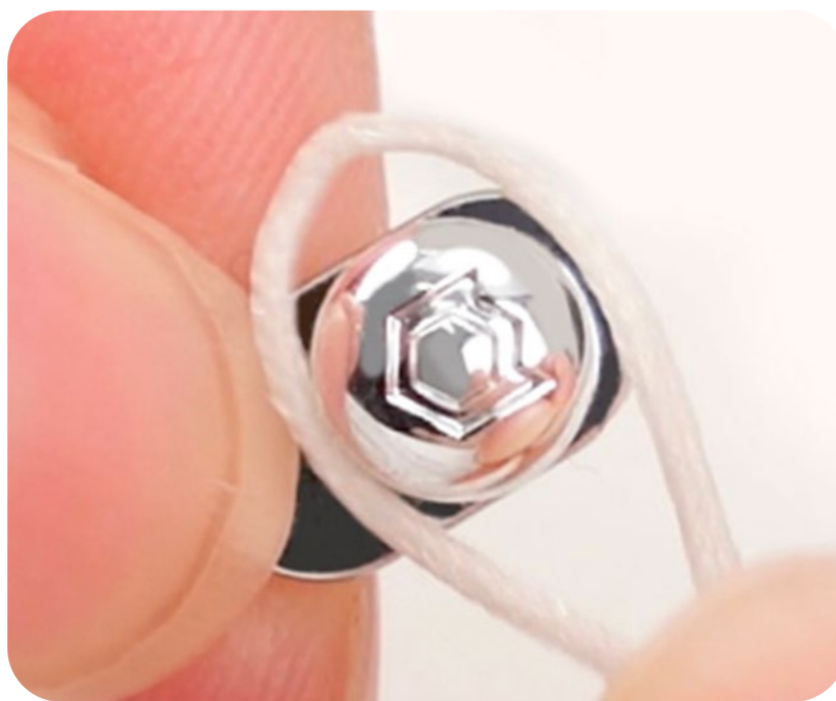
The iFace Signature Ball adds a unique design element for a striking brand identity. The functional design hole allows for attaching a hand strap or key rings.



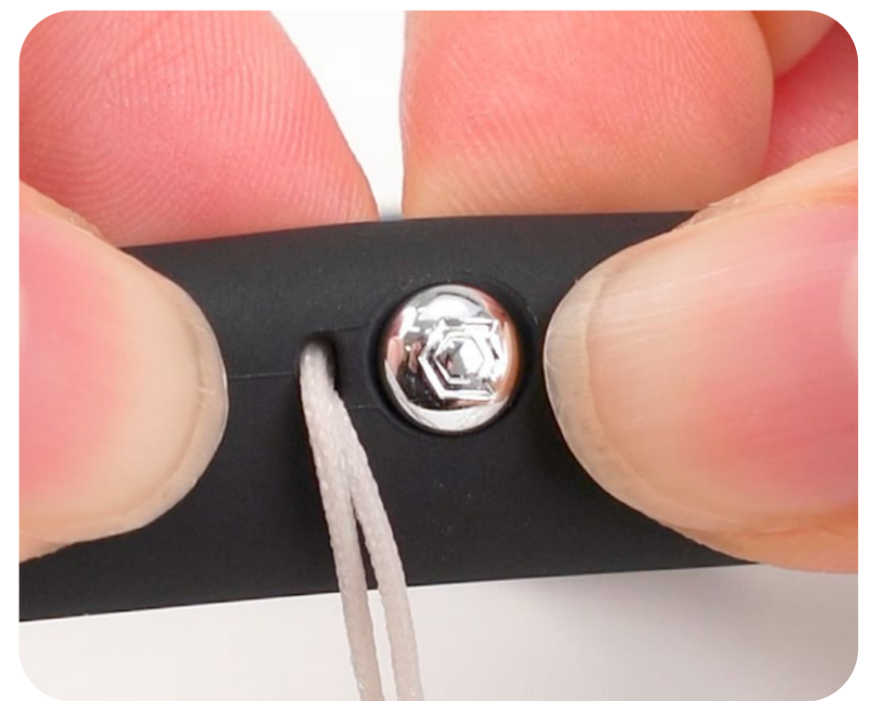
How to attach a strap to the Signature Ball :



1 Insert the strap string through the small strap hole on the side of the case.



2 Hang the strap string around the neck of the Signature Ball.



3 Insert the Signature Ball into the Signature Ball hole and gently pull the strap.

How to use

How to assemble :



- 1 Please align the smart device with the top right corner of the case where the camera hole is.



- 2 Gently press and secure each corner in order from 1 to 4.

Separation :



- 1 To remove, simultaneously press both sides from the bottom.



- 2 Safely removed!

By Your Side

We encourage you to take the road you've never taken.
Try something you've never done before.
Explore the unknown daily with the warm feeling of being safe.
We will always protect you.
We are iFace.

Inspired &
Designed in
Seoul



 iFace

iface.com