

100% Original

iFace

Reflection  
for iPhone 16 Series



Official Store

Reflection Case



## Hexagon Pattern

Superior protection from external impacts

**3X**  
Protection



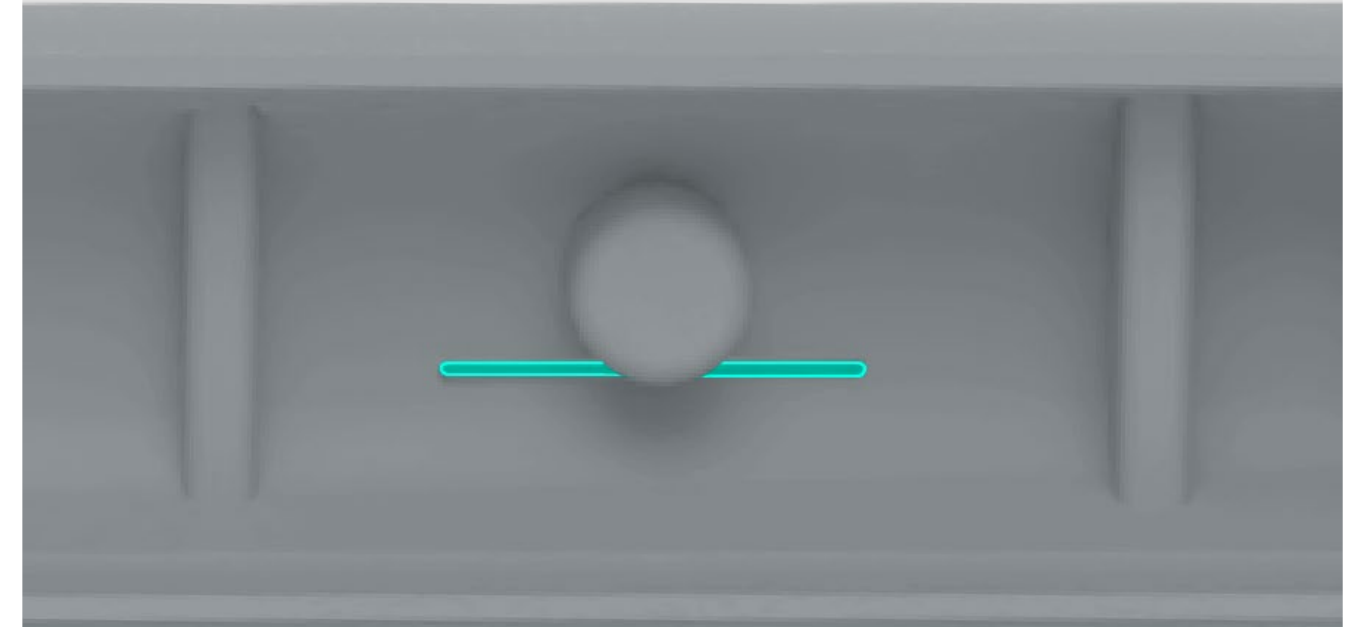
Four corners

**Air**  
Pocket

**TPU**  
Durable  
Lightweight  
Flexible



## Sensible Touch Feel



Inner rounded protrusions and integrated seams

## Innovative Attention to Detail



## Camera Control Hole

Hassle-Free and comfortable



## Strap Hole

# High Durability

Minimize scratches and external shocks from daily use



Shatter-Resistant

Anti-Fingerprint

Prevent Bubbles

**9H**

**Flexible Tempered Glass**

**Normal  
Tempered Glass**



**iFace Reflection  
with Shatter-Resistant  
Treatment**



# **Shatter-Resistant**

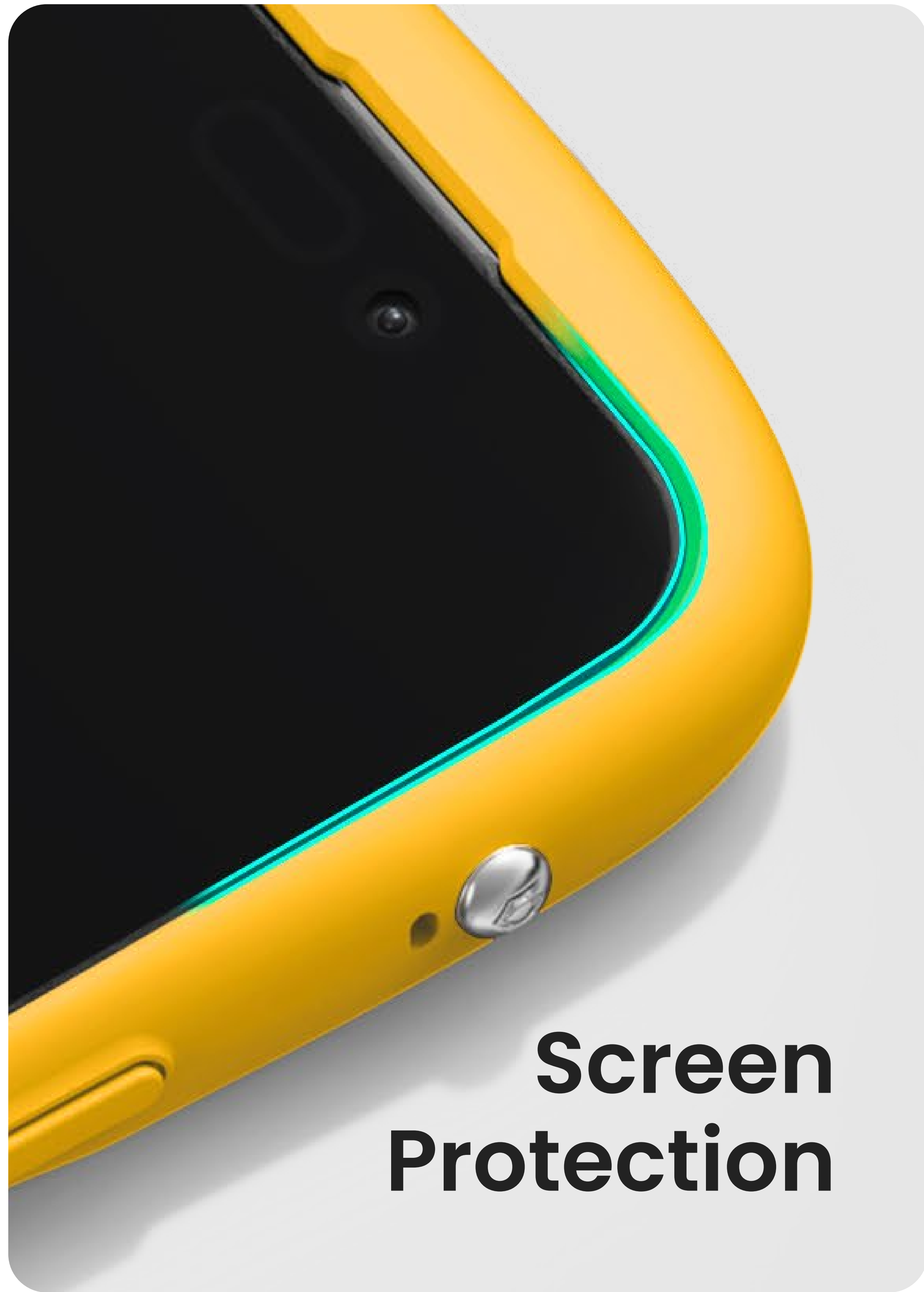
Special treatment minimizes shards of  
glass in case of damage

**No more  
devastating  
drops**



## **MIL-STD-810G Test**

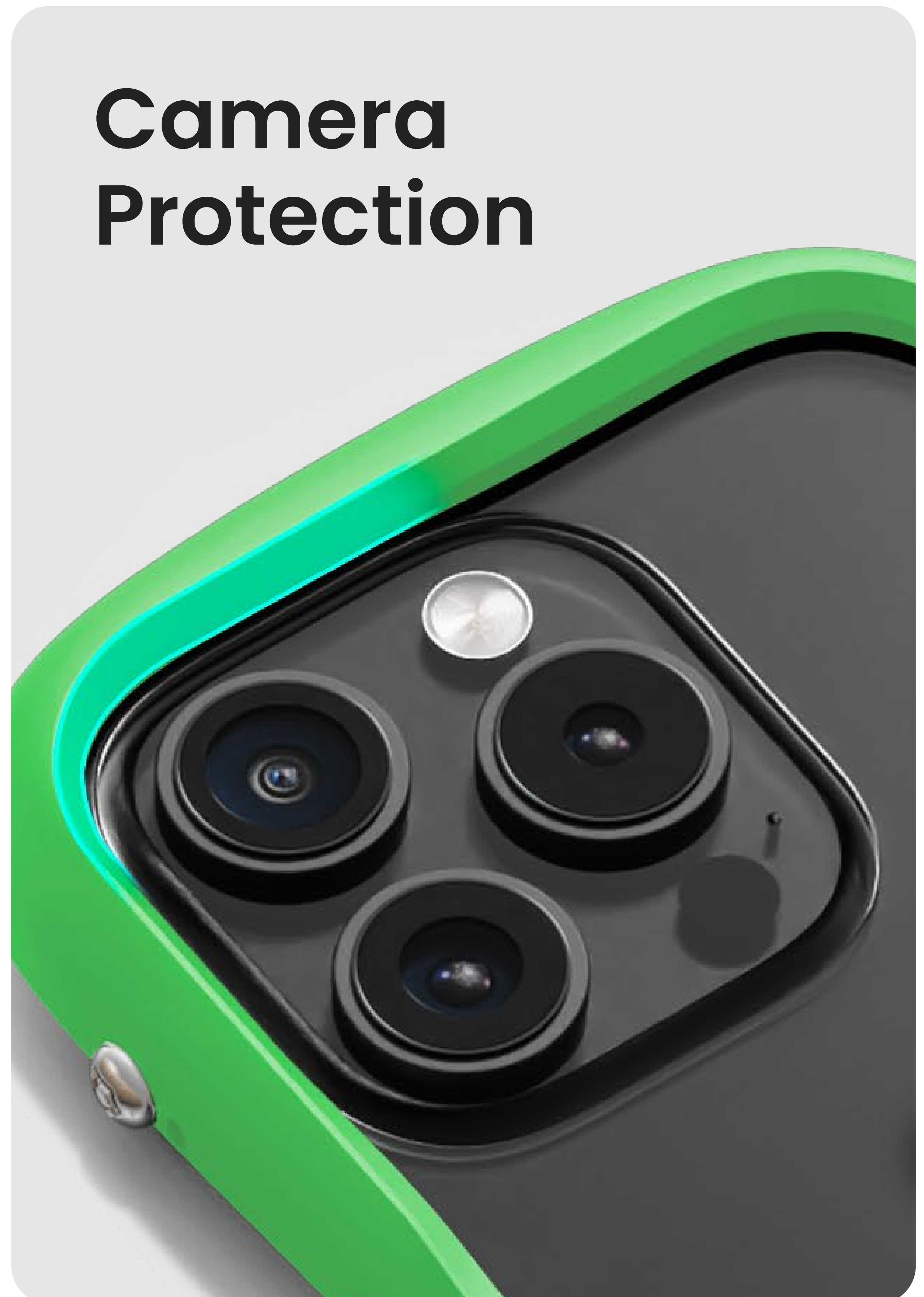
**Over 26 drops from a height of 1.22m  
with no damage or abnormalities**



**Screen  
Protection**

**Raised  
Bezel**

Perfectly capturing  
every detail with  
unique clarity



**Camera  
Protection**



**Black**



**Gray**



**Beige**



**Pale Blue**



**Sakura  
Pink**



**Lime  
Green**



**Honey  
Yellow**

🔄 Based on Customer Review

# Upgraded Glass!

Using iFace's exclusive technology, our flexible tempered glass is both strong and safe, ensuring flexibility and durability during installation and removal.

\*Applicable from the iPhone 16 Series.

Increased  
Flexibility for Better  
Durability



You may also like :



Reflection MagSynq



Reflection Neo



Reflection Neo MagSynq



**🔗 New! Only iFace**

# Signature Ball

The iFace Signature Ball adds a unique design element for a striking brand identity. The functional design hole allows for attaching a hand strap or key rings.

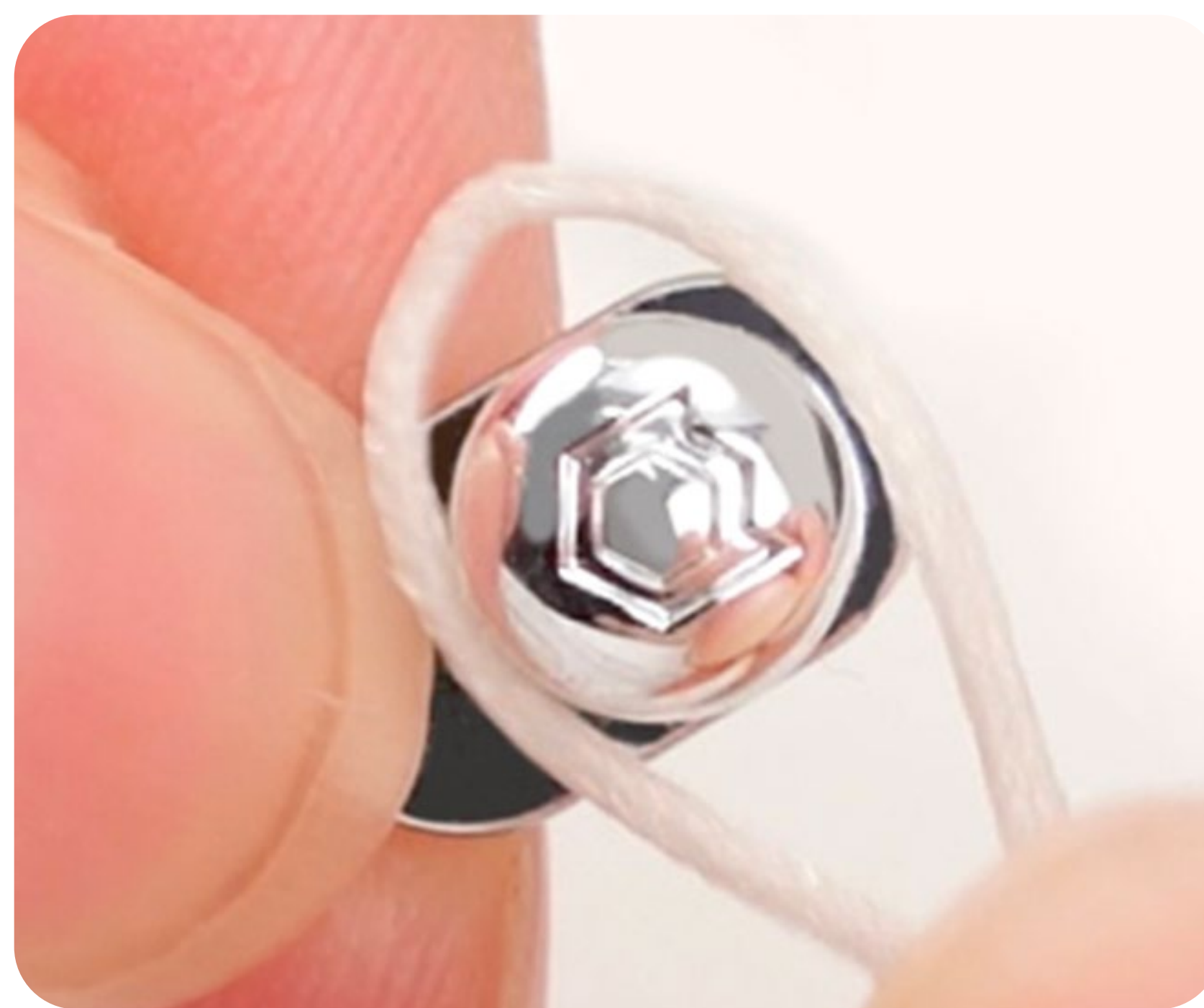


\*Applicable from the iPhone 16 Series.

## How to attach a strap to the Signature Ball :



**1** Insert the strap string through the small strap hole on the side of the case.



**2** Hang the strap string around the neck of the Signature Ball.



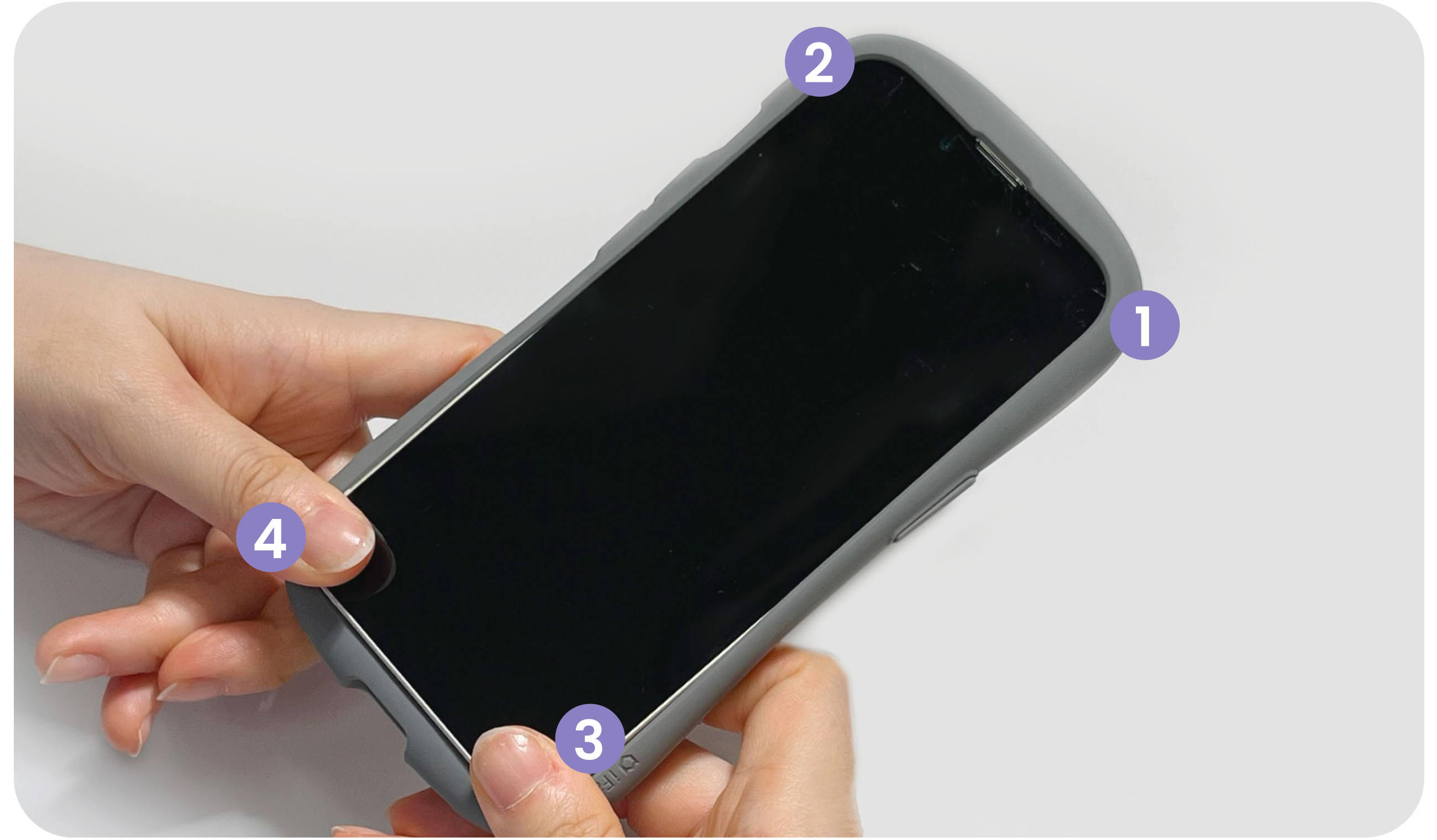
**3** Insert the Signature Ball into the Signature Ball hole and gently pull the strap.

# How to use

## How to assemble :



- 1 Please align the smart device with the top right corner of the case where the camera hole is.



- 2 Gently press and secure each corner in order from 1 to 4.

## Separation :



- 1 To remove, simultaneously press both sides from the bottom.



- 2 Safely removed!

# By Your Side

We encourage you to take the road you've never taken.  
Try something you've never done before.  
Explore the unknown daily with the warm feeling of being safe.  
We will always protect you.  
We are iFace.

Inspired &  
Designed in  
**Seoul**



 iFace

[iface.com](https://iface.com)