

100% Original

 iFace

Reflection Frost  
for iPhone



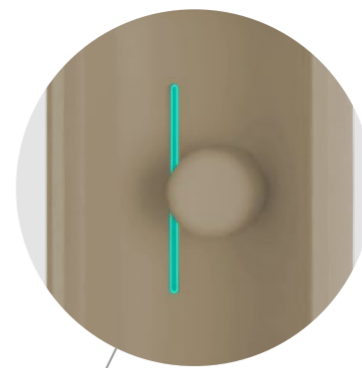
Official Store

Frost Glass Case



### Signature Ball

Easy and more secure way to accessorize



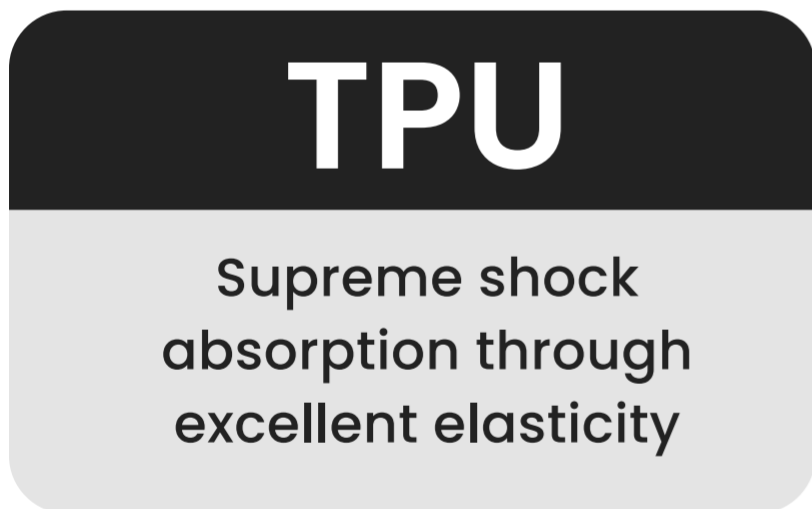
### Sensible Touch Feel

Inner rounded protrusions and integrated seams



All corners

## Air Pocket



## TPU

Supreme shock absorption through excellent elasticity



## Hexagon Pattern

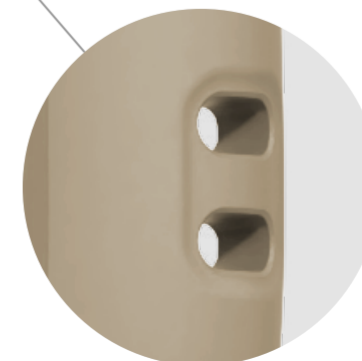
Superior protection from external impacts



# 3x Protection



## Innovative Attention to Detail



### Strap Hole

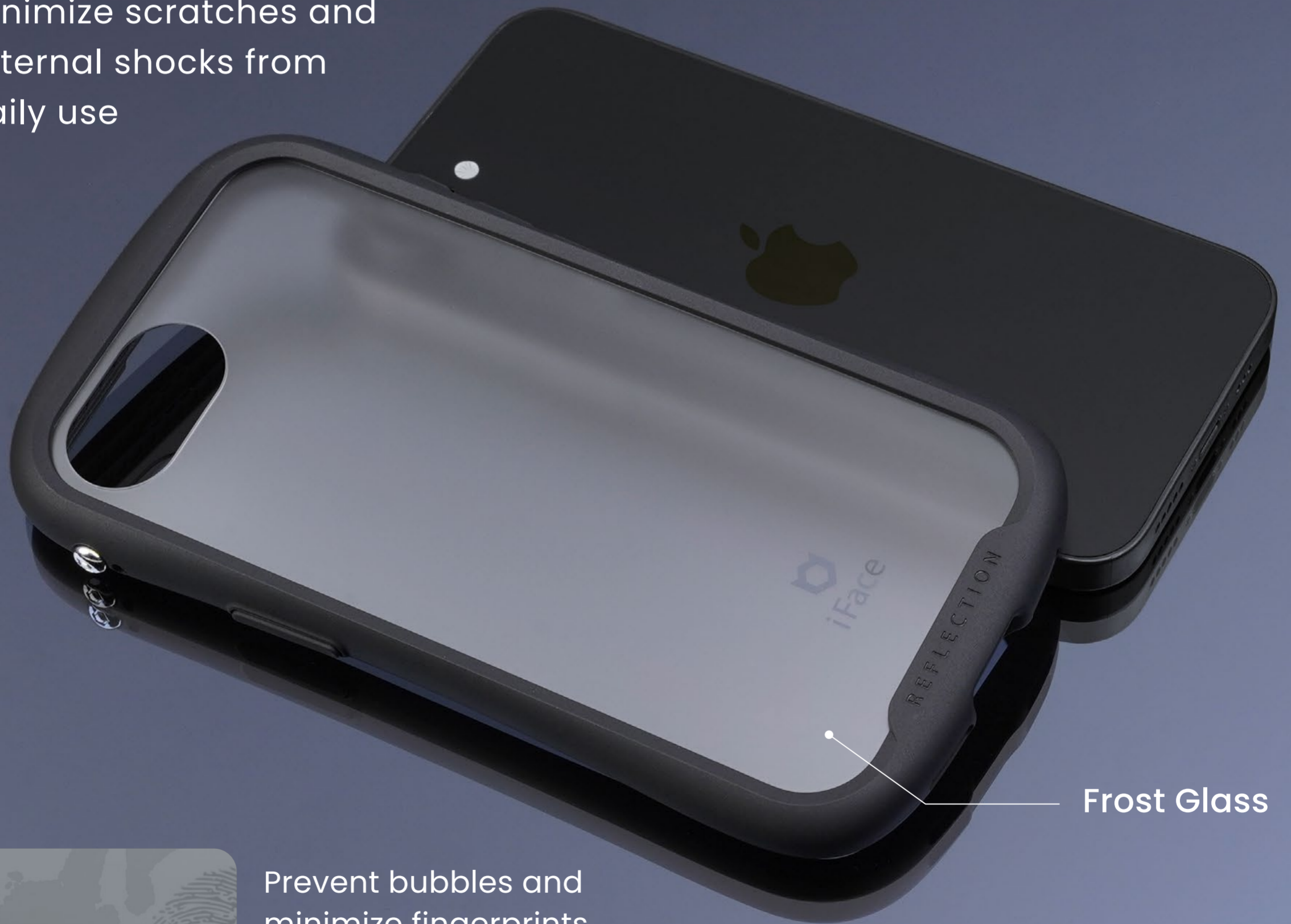
Attaching lanyards, straps, and charms



# High Durability Tempered Glass

9H

Minimize scratches and  
external shocks from  
daily use



Frost Glass



Prevent bubbles and  
minimize fingerprints  
on the case

**Normal  
Tempered Glass**



**iFace Reflection  
with Shatter-Resistant  
Treatment**



# **Shatter-Resistant**

Special treatment minimizes shards of  
glass in case of damage

# No more devastating drops

Military-grade protection



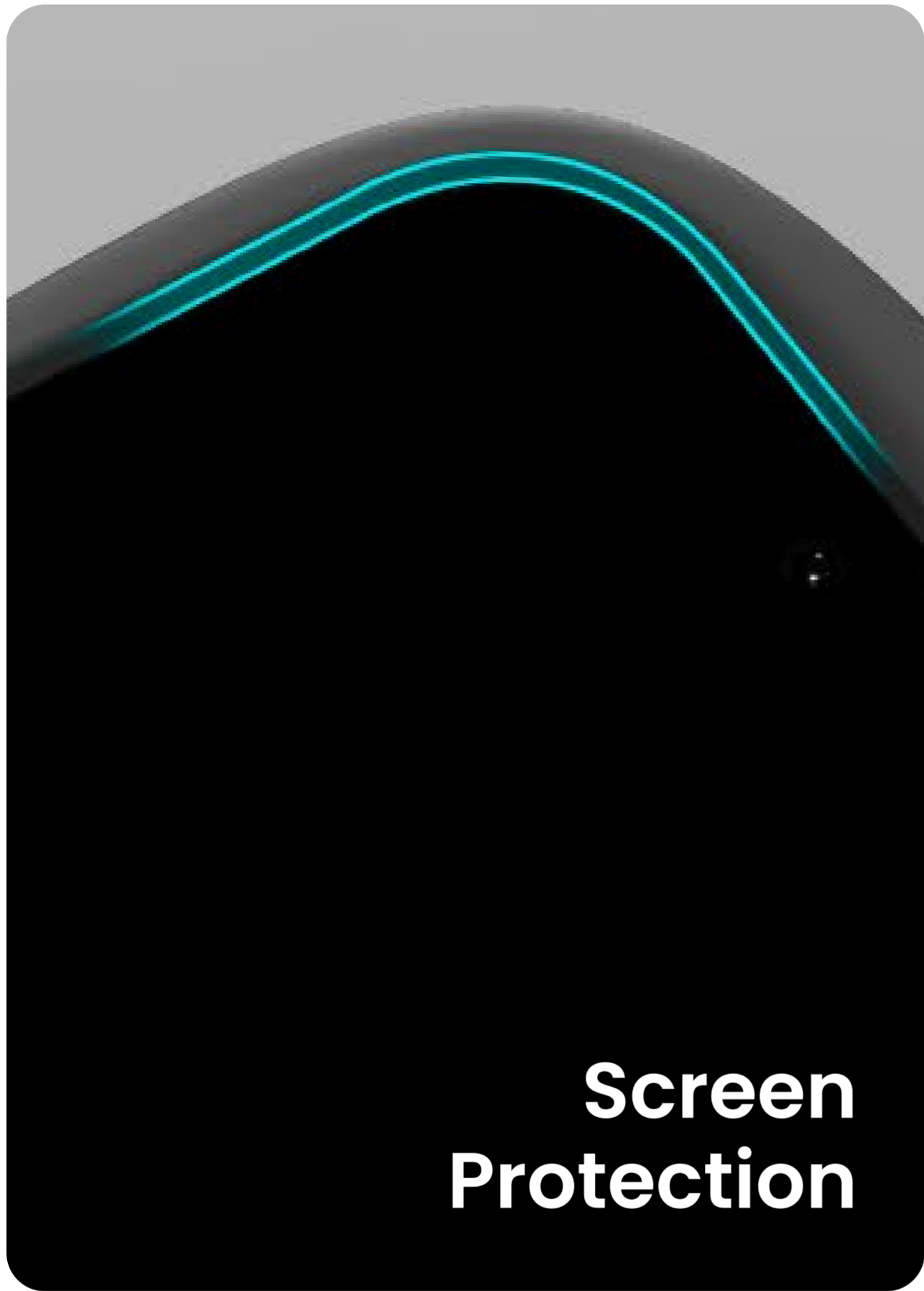
## **MIL-STD-810G Test**

Over 26 drops from a height of 1.22m  
with no damage or abnormalities

# A phone as unique as you are

Create a unique look with each different color





**Screen  
Protection**

**Raised  
Bezel**

Perfectly capturing  
every detail with  
unique clarity



**Camera  
Protection**



Black



Gray



Beige



Pale Blue

 Based on Customer Review

# Upgraded Glass!

Using iFace's exclusive technology, our flexible tempered glass is both strong and safe, ensuring flexibility and durability during installation and removal.

**Increased  
Flexibility for Better  
Durability**





**🔧 New! Only iFace**

# Signature Ball

The iFace Signature Ball adds a unique design element for a striking brand identity. The functional design hole allows for attaching a hand strap or key rings.



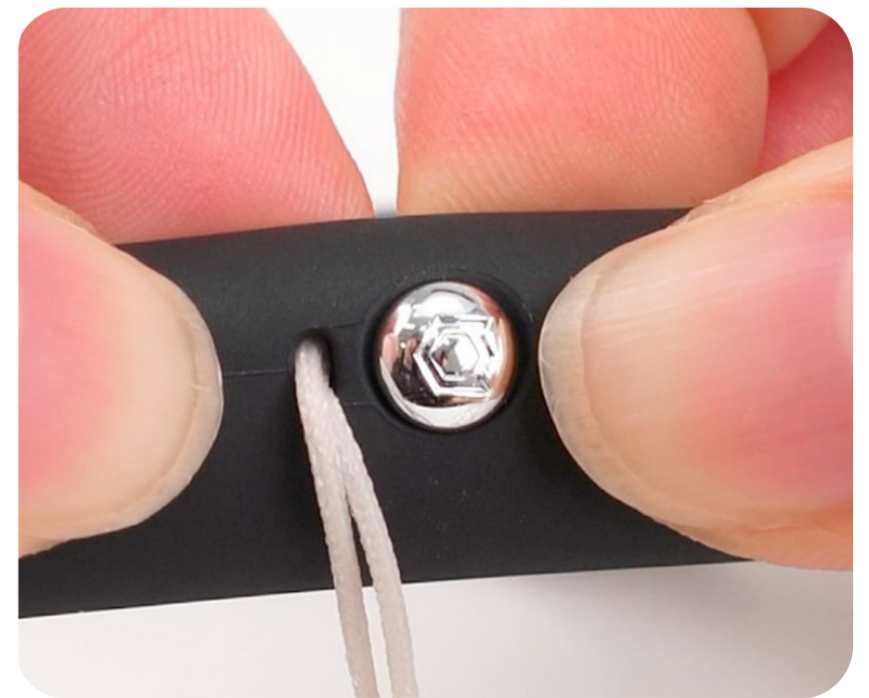
## How to attach a strap to the Signature Ball :



**1** Insert the strap string through the small strap hole on the side of the case.



**2** Hang the strap string around the neck of the Signature Ball.



**3** Insert the Signature Ball into the Signature Ball hole and gently pull the strap.

# How to use

## How to assemble :



- 1 Please align the smart device with the top right corner of the case where the camera hole is.



- 2 Gently press and secure each corner in order from 1 to 4.

## Separation :



- 1 To remove, simultaneously press both sides from the bottom.



- 2 Safely removed!

# By Your Side

We encourage you to take the road you've never taken.  
Try something you've never done before.  
Explore the unknown daily with the warm feeling of being safe.  
We will always protect you.  
We are iFace.

Inspired &  
Designed in

Seoul



 iFace

Copyright© iFace All Right Reserved.  
All trademarks are the property of their respective owners.

[iface.com](https://iface.com)